




Climatic Bulletin

June 2011

 **Max
temperature**

 **Min
temperature**

 **Mean
temperature**

 **Precipitation**

 **Sunshine
duration**



In June locally strong thunderstorms with hail recorded over most parts of Greece . Also, flood episodes occurred in Southern Evia and northern parts of Attica , in the middle of the month. Nevertheless, gale force Northern winds prevailed over Aegean area during the last ten days.



ΕΘΝΙΚΗ
ΜΕΤΕΩΡΟΛΟΓΙΚΗ
ΥΠΗΡΕΣΙΑ

HELLENIC NATIONAL METEOROLOGICAL SERVICE



Temperature

First Decameron

Minimum: low values which raised at the end.

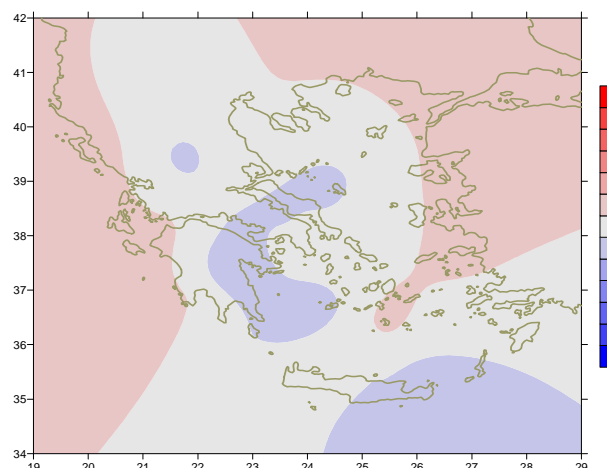
More specific:

9.6°C in Kastoria and 11.2°C in Kozani (1/6) but respectively 13.6°C and 16°C in the same towns (8/6).

Maximum: high values at the end.

More specific:

36°C in Souda, 36.2°C in Lamia, 35.2°C in Milos, 35°C in Astros at 9/6.



Deviation of mean temperature from normal values

Second Decameron

Minimum: relatively high values since the middle of the period.

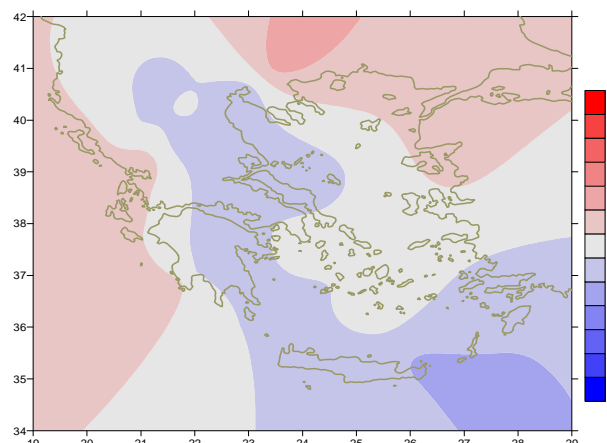
More specific (the highest):

23°C in Samos at 15/6, 23.6°C in Chios, 23.4°C in Kasos at 18/6.

Maximum: low values between 12/6 and 16/6 which raised at the end.

More specific:

33.7°C in Leonidio (17/6),
 35.8°C in Larisa (19/6),
 36.7°C in Lamia (19/6).



Deviation of maximum temperature from normal values

Third Decameron

Minimum: the values were low at the end.

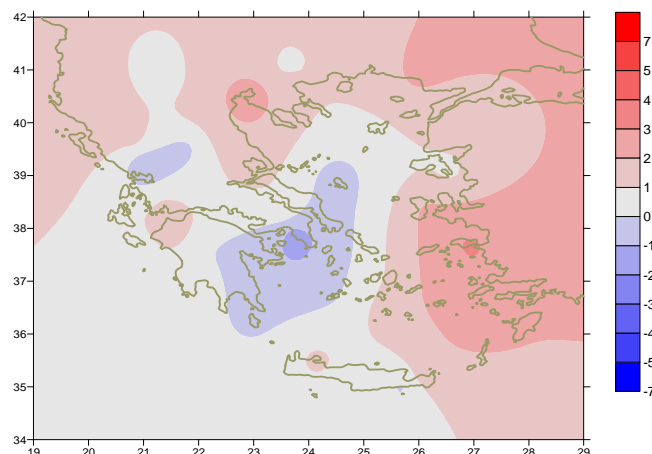
More specific (from the lowest):

9°C in Florina, 8°C in Kastoria and 8.4°C in Tripoli at 28/6.

Maximum: high values for the period 21-24/6.

For example:

in Arta 35.4°C at 21/6, in Timbaki 35°C at 21/6.
 the highest value of the month 37.4°C , in Serres at 24/6.



Deviation of minimum temperature from normal values



Precipitation

First Decameron

Remarkable precipitation amounts over mainland (mainly NW parts).

More specific:

30mm in Kastoria,

10mm in Velo (Korinthia) at 3/6,

28mm in Desfina at 4/6 and 6mm in Florina at 9/6.

Second Decameron

Very high precipitation between 12/6 and 16/6.

More specific:

31mm in Skyros at 13/6, 17mm in Agrinio at 14/6,

35mm in Elefsina at 15/6,

and 38mm in Karistos at 16/6.

Third Decameron

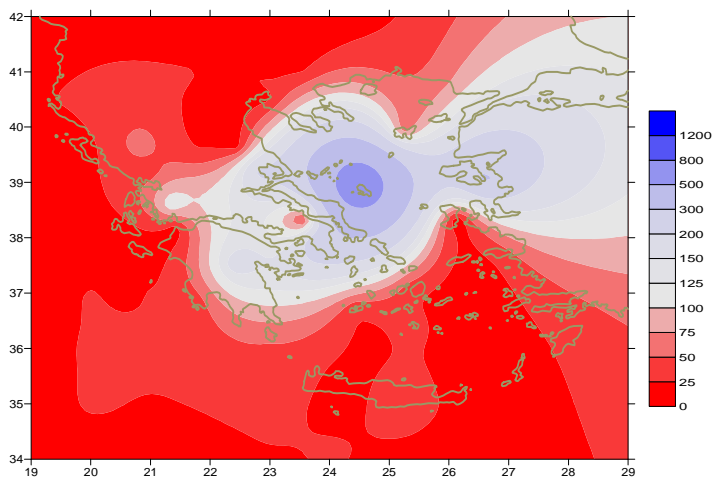
Remarkable precipitation amounts recorded

after 26/6.

More specific:

6.4mm in Skyros (26/6),

7mm in Mitilini (29/6).



Deviation of monthly precipitation height from normal values (%)

TABLE OF MEAN VALUES

STATION	Longitude	Latitude	Tmean	TX	TN	RR	INST
SERRES	23,53	41,07	25,1	32	17,1	9	290
FLORINA	21,40	40,78	21	25,8	12,7	23	254
KASTORIA	21,27	40,45	21,1	26,3	12,5	56	287
TRIKALA_IMATHIAS	22,55	40,60	24,6	30,4	17,4	8	291
THESSALONIKI	22,97	40,52	24,6	28,5	18,6	8	332
CHRYSOUPOLI	24,62	40,92	24	27,3	18	17	277
ALEXANDROUPOLI	25,95	40,85	24,4	28,5	17	25	308
KOZANI	21,83	40,28	22,2	26,4	14,3	9	
KERKYRA	19,92	39,62	25,4	29,4	18	6	351
IOANNINA	20,82	39,70	22,5	27,7	14,2	42	275
PREVEZA	20,76	38,91	24,6	28,7	19	17	
TRIKALA_THESSALIAS	21,77	39,52					
LARISA	22,45	39,65	25,6	30,7	16,5	6	296
LIMNOS	25,23	39,92	23,9	27,6	17,6	15	351
ARTA	21,00	39,17	24,7	31	16,3	21	271
AGHIALOS	22,78	39,21	24,7	28,5	17,5	44	313
MYTILINI	26,60	39,05	25,9	29,8	20,1	19	383
VELO	22,77	37,97	25,7	29,7	18,4	28	319
AGRINIO	21,35	38,60	25,2	30,9	16,3	31	333
LAMIA	22,43	38,87					
ANDRAVIDA	21,28	37,92	24,7	28,8	17,2	13	332
SKYROS	24,48	38,96	23,5	25,8	18,8	38	275
ARGOSTOLI	20,50	38,12	24,5	27,7	19,2	3	364
ARAXOS	21,42	38,15	25,3	28,9	18,1	0	298
TANAGRA	23,57	38,33	25	29,2	16,3	5	333
HIOS	26,13	38,35	24,9	28	19,4	0	353
PYRGOS	21,42	37,67	25,1	29,3	16,7	3	208
TRIPOLI	22,40	37,52	21,5	26,9	11,7	42	299
TATOI	23,78	38,10	23,9	27,7	17,5	21	
HELLINIKO	23,73	37,90	25,4	29	18,6	15	336
ELEYSINA	23,55	38,07	25,9	30	19,8	42	
ZAKYNTHOS	20,88	37,75	25,5	28,9	18,8	0	307
SAMOS	26,92	37,68	26,4	29,7	21,4	0	
ARGOS	22,75	37,63					
KALAMATA	22,02	37,07	24,5	28,8	16,5	5	317
NAXOS	25,37	37,10	24,1	26,6	20,2	0	371
METHONI	21,70	36,82	23,7	26,6	19	1	321
MHLOS	24,43	36,73					
SPATA	23,95	37,95	22,8	27,1	16,6	11	
KOS	27,08	36,80	24,3	27,6	20,8	0	
KYTHIRA	22,98	36,15					
SANTORINI	25,41	36,41	24,7	27,4	21,1	0	349
SOUDA	24,12	35,55	24,6	28,4	19,7	0	339
RODOS	28,08	36,40	25,1	27,6	21,9	0	383
MYKONOS	25,35	37,43	23,6	26,2	20,6	0	
HERAKLEIO	25,18	35,33	24,3	26,8	19,5	0	352
IERAPETRA	25,73	35,02					
SITEIA	26,10	35,21	23,6	26,2	20,9	0	377
RETHYMNO	24,50	35,36					
TYMPAKI	24,76	35,06	25,2	28,7	18,2	0	366
KASTELI	25,33	35,18	22,9	26,8	17,5	1	324
KARPETHOS	27,15	35,42	24	26,7	21,9	0	
PAROS	25,13	37,02	24,6	27,8	19,9	0	358
SYROS	24,95	37,42	24,4	27,1	20,4	0	358
IKARIA	26,35	37,68	23,2	24,7	21,6	12	

Climatic Bulletin

General Description

Precipitation amounts were quite higher than normal values over Central Aegean and Evia. In contrast, they were lower than normals over most parts of western and northern mainland, over Ionian area and South Aegean area. The mean temperature varied lower than normal values over eastern Peloponnese, eastern Sterea-Evia and southeastern Aegean area as well.

Climatic Parameters :

- ❖ **Normal Values** : normal values for various parameters (temperature, precipitation, etc) are defined as mean values calculated for 30 years. These normal values are used as basis and represent the mean situation. They can be specified in 10 daily, monthly, seasonally and yearly level and are used for the trend comparison of 10 days, month, season or year as: rainy decameron, mild winter, cool August etc.

Measurement :

- ❖ **Precipitation**
1 mm = 1 litre/m²

Table Legend :

Tmean : Mean Temperature
 TN : Minimum Temperature
 TX : Maximum Temperature
 RR : Precipitation height(mm)
 INST : Sun Duration (hours)

UTC hours (Universal Time Coordinates) in Greece :

- ❖ Winter : UTC hour = local hour - 2
- ❖ Summer : UTC hour = local hour - 3

© Hellenic National Meteorological Service
 Reproduction is prohibited without written authorization
 14 El.Venizelou 16777
 Helliniko, Athens
 Greece