




# Climatic Bulletin

November 2012

 **Max  
temperature**

 **Min  
temperature**

 **Mean  
temperature**

 **Precipitation**

 **Sunshine  
duration**



November started with very high values of temperature which declined from the second week. Locally strong rainfalls and thunderstorms recorded, from the middle of month till the end, which caused significant floods over Greek mainland and over most parts of Southern Aegean and Crete.



ΕΘΝΙΚΗ  
**ΜΕΤΕΩΡΟΛΟΓΙΚΗ**  
ΥΠΗΡΕΣΙΑ

HELLENIC NATIONAL METEOROLOGICAL SERVICE



# Temperature

## First Decameron

**Minimum:** high values at the beginning.

More specific (varied) :

from  $-4^{\circ}\text{C}$  to  $12^{\circ}\text{C}$  over NW mainland,

from  $8^{\circ}\text{C}$  to  $19^{\circ}\text{C}$  over rest mainland,

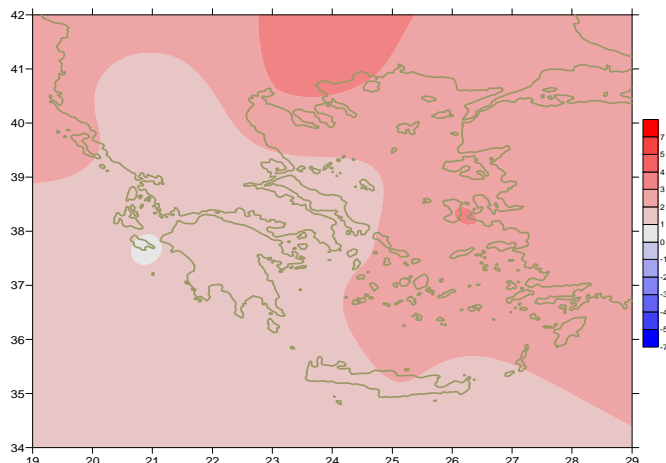
from  $12^{\circ}\text{C}$  to  $21^{\circ}\text{C}$  over islands.

**Maximum:** high values till 6/11 which declined.

More specific:

$29.8^{\circ}\text{C}$  in Aghialow,  $28.6^{\circ}\text{C}$  in Spata,

$28.8^{\circ}\text{C}$  in Skyros at 6/11.



*Deviation of mean temperature from normal values*

## Second Decameron

**Minimum:**

More specific (varied) :

from  $-3.3^{\circ}\text{C}$  to  $13.8^{\circ}\text{C}$  over NW mainland,

from  $4.5^{\circ}\text{C}$  to  $15^{\circ}\text{C}$  over rest mainland,

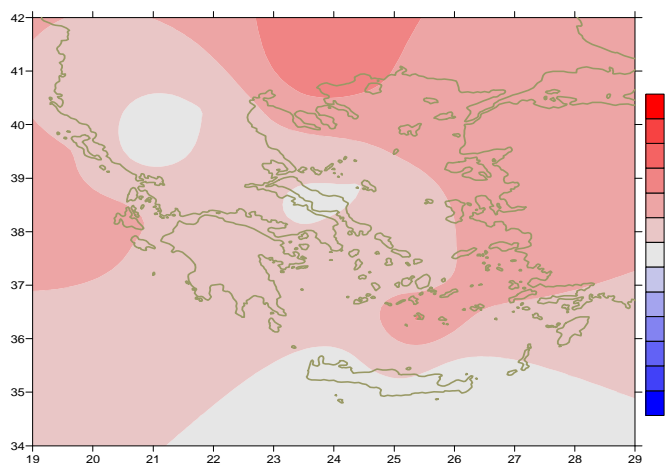
from  $11^{\circ}\text{C}$  to  $19^{\circ}\text{C}$  over islands.

**Maximum:** very high values over southern parts.

More specific:

$22.4^{\circ}\text{C}$  in Kalamata ( 11/11),

$22.6^{\circ}\text{C}$  in Rodos (15/11),  $22.4^{\circ}\text{C}$  in Samos ( 16/11).



*Deviation of maximum temperature from normal values*

## Third Decameron

**Minimum:** relatively low values at the end.

More specific (varied) :

from  $+0.4^{\circ}\text{C}$  to  $11^{\circ}\text{C}$  over North mainland,

from  $3^{\circ}\text{C}$  to  $14^{\circ}\text{C}$  over rest mainland,

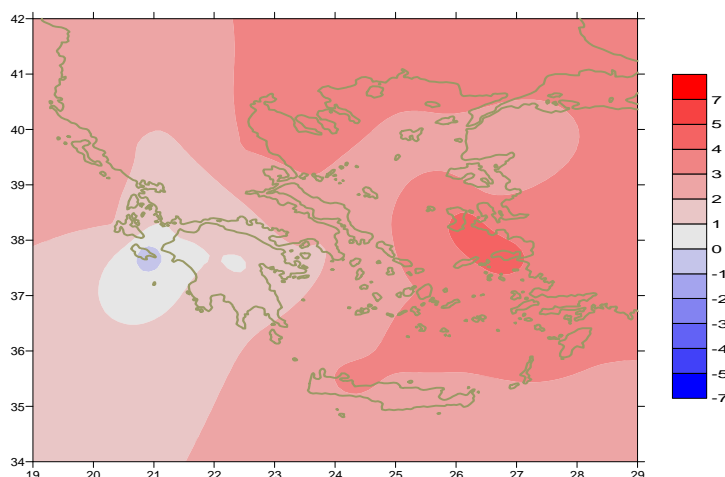
from  $10^{\circ}\text{C}$  to  $18^{\circ}\text{C}$  over islands.

**Maximum:** .

For example (from the highest):

from  $22^{\circ}\text{C}$  in Kerkyra at 21/11,  $22.2^{\circ}\text{C}$  in Spata at 29/11

and  $22.4^{\circ}\text{C}$  in Naxos at 30/11.



*Deviation of minimum temperature from normal values*



## Precipitation

### First Decameron

Local rainfalls and thunderstorms mainly over west, central and southern parts from 6/11 to 8/11.

More specific:

*26mm in Ioannina at 6/11,*

*23mm in Spata, 22mm in Mykinos, 28mm in Kasteli at 8/11.*

### Second Decameron

Strong rainfalls and thunderstorms temporarily

From 16 to 20/11.

More specific:

*28mm in Kithira, 60mm in Souda, 61mm in Kasos at 17/11,*

*28mm in Larisa, 38mm in Kalamata,*

*24mm in Astypalea, 34mm in Kithira at 20/11.*

### Third Decameron

Locally strong rainfalls and thunderstorms at

21,22/11 and mainly 29,30/11.

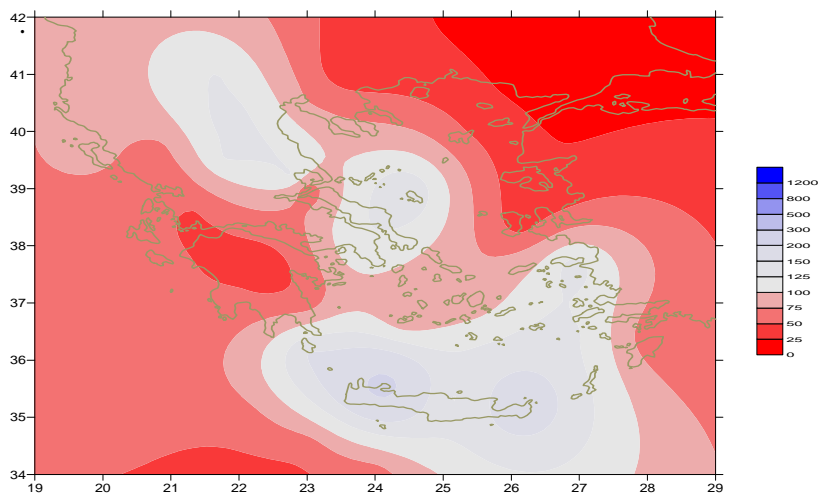
More specific:

*44mm in Esessa, 43mm in Skyros,*

*33mm in Tatoi at 21/11,*

*72mm in Kerkira, 40mm in Zakynthos, 40mm in Ioannina at 29/11,*

*and 33mm in Icaria at 30/11.*



*Deviation of monthly precipitation height from normal values (%)*

TABLE OF MEAN VALUES

STATION	Longitude	Latitude	Tmean	TX	TN	RR	INST
SERRES	23,53	41,07	12,6	17,7	7,8	18	49
FLORINA	21,40	40,78					
KASTORIA	21,27	40,45	9,5	14,2	4,7	83	90
TRIKALA_IMATHIAS	22,55	40,60					
THESSALONIKI	22,97	40,52	13,8	17,7	10,7	42	123
CHRYSOUPOLI	24,62	40,92	13,2	17,5	9,6	18	139
ALEXANDROUPOLI	25,95	40,85	13,6	17,4	10	16	159
KOZANI	21,83	40,28	9,7	14,1	6,2	80	
KERKYRA	19,92	39,62	16,4	20,7	12,7	149	124
IOANNINA	20,82	39,70	11,1	16,2	6,6	110	98
PREVEZA	20,76	38,91	16,3	20,1	13,2	86	
TRIKALA_THESSALIAS	21,77	39,52					
LARISA	22,45	39,65	12,7	17,7	8,5	73	114
LIMNOS	25,23	39,92	15	18	11,9	42	162
ARTA	21,00	39,17					
AGHIALOS	22,78	39,21	13,9	18,3	10,7	80	127
MYTILINI	26,60	39,05	16,9	19,7	14	26	144
VELO	22,77	37,97					
AGRINIO	21,35	38,60	14,3	20,6	8,8	83	170
LAMIA	22,43	38,87					
ANDRAVIDA	21,28	37,92	15,3	20,9	10,7	53	168
SKYROS	24,48	38,96	16,4	18,2	14,8	82	132
ARGOSTOLI	20,50	38,12	17,3	21	14,4	100	167
ARAXOS	21,42	38,15	16	20,6	11,5	59	182
TANAGRA	23,57	38,33	14,3	18,3	10,9	66	111
HIOS	26,13	38,35	16,9	19,2	14,3	32	157
PYRGOS	21,42	37,67					
TRIPOLI	22,40	37,52	11,5	17,3	5,8	36	110
TATOI	23,78	38,10	14,7	18,5	11,4	92	
HELLINIKO	23,73	37,90	17,3	20,5	13,9	60	125
ELEYSINA	23,55	38,07	16,8	20	13,6	57	
ZAKYNTHOS	20,88	37,75	16,5	20,8	11,9	96	163
SAMOS	26,92	37,68	17,5	20,4	14,9	15	
ARGOS	22,75	37,63					
KALAMATA	22,02	37,07	16,6	22,2	11,6	84	150
NAXOS	25,37	37,10	18,2	20	16,4	36	116
METHONI	21,70	36,82					
MHLOS	24,43	36,73					
SPATA	23,95	37,95	16,8	19,5	13,2	94	
KOS	27,08	36,80	17,6	19,9	15,5	131	
KYTHIRA	22,98	36,15					
SANTORINI	25,41	36,41	18,3	21,1	16,3	63	150
SOUDA	24,12	35,55	17,3	20,3	15	164	106
RODOS	28,08	36,40	18,9	21,8	16,2	48	166
MYKONOS	25,35	37,43	16,9	18,6	15,9	42	
HERAKLEIO	25,18	35,33	18,7	21,2	16,3	72	132
IERAPETRA	25,73	35,02					
SITEIA	26,10	35,21	18,3	20,5	16,5	108	116
RETHYMNO	24,50	35,36					
TYMPAKI	24,76	35,06					
KASTELI	25,33	35,18	15,8	19,1	13	62	139
KARPATOS	27,15	35,42					
PAROS	25,13	37,02					
SYROS	24,95	37,42	17,1	19,2	15,3	167	
IKARIA	26,35	37,68	16,8	18,7	16,1	87	

TABLE OF DEVIATIONS  
FROM NORMAL VALUES

STATION	TMEAN ( deviation ) (I)	PRECI ( deviation % ) (II)
SERRES	3.5	34
FLORINA	1.7	129
THESSALONIKI	2.9	73
ALEXANDROUPOLI	2.6	21
KOZANI	1.7	133
KERKYRA	2.2	83
IOANNINA	1.4	67
LARISA	1.9	125
LIMNOS	2.7	56
AGHIALOS	1.8	127
MYTILINI	2.4	28
AGRINIO	1.3	49
SKYROS	1.7	152
ARGOSTOLI	1.6	62
ARAXOS	1.4	45
HIOS	3.1	39
HELLINIKO	1.9	118
ZAKYNTHOS	0.7	60
SAMOS	3	136
KALAMATA	1.9	59
NAXOS	2	76
METHONI		
SANTORINI	2.9	117
SOUDA	1.7	225
RODOS	2.5	54
HERAKLIO	2.1	122
SITIA	1.5	178

(I) deviation of mean temperature from normal values  
 (II) deviation of monthly precipitation height from normal values %.

# Climatic Bulletin

## General Description

Precipitation amounts were higher than normal values over most parts of Greece with exception of northeastern (mainland and islands) and Peloponnese where they were lower.  
The mean temperature varied higher than normal values everywhere.

### Climatic Parameters :

- ❖ **Normal Values** : normal values for various parameters (temperature, precipitation, etc) are defined as mean values calculated for 30 years. These normal values are used as basis and represent the mean situation. They can be specified in 10 daily, monthly, seasonally and yearly level and are used for the trend comparison of 10 days, month, season or year as: rainy decameron, mild winter, cool August etc.

### Measurement :

- ❖ **Precipitation**  
1 mm = 1 litre/m<sup>2</sup>

### Table Legend :

Tmean : Mean Temperature  
TN : Minimum Temperature  
TX : Maximum Temperature  
RR : Precipitation height(mm)  
INST : Sun Duration (hours)

### UTC hours (Universal Time Coordinates) in Greece :

- ❖ Winter : UTC hour = local hour - 2
- ❖ Summer : UTC hour = local hour - 3

© Hellenic National Meteorological Service  
Reproduction is prohibited without written authorization  
14 El.Venizelou 16777  
Helliniko, Athens  
Greece