




Climatic Bulletin

March 2015

 **Max
temperature**

 **Min
temperature**

 **Mean
temperature**

 **Precipitation**

 **Sunshine
duration**

March had a relatively hot first and last week and an intermediate cold period.

It characterized by significant rainfalls, thunderstorms, local hail and snowfalls over mountainous areas.

Also, a few rivers were in flood over northern mainland because of the huge amounts of gathered waters.



ΕΘΝΙΚΗ
ΜΕΤΕΩΡΟΛΟΓΙΚΗ
ΥΠΗΡΕΣΙΑ

HELLENIC NATIONAL METEOROLOGICAL SERVICE



Temperature

First Decameron

More specific (varied) :

Minimum:

from -2°C to 9°C over north mainland,
 from -1°C to 12°C over central mainland,
 from $+2^{\circ}\text{C}$ to 16°C over rest parts.

Maximum:

from 3°C to 15°C over north mainland,
 from 8°C to 21°C over central mainland,
 from 12°C to 24°C over rest parts.

Second Decameron

More specific (varied) :

Minimum:

from -6.6°C to 7°C over North mainland,
 from -2°C to 11°C over central mainland,
 from 0°C to 13°C over rest parts.

Maximum:

from 6°C to 18°C over north mainland,
 from 9°C to 18.5°C over central mainland,
 from 11°C to 17°C over rest parts.

Third Decameron

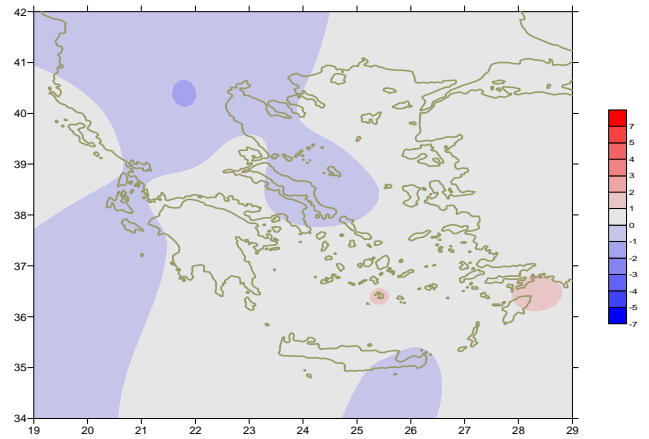
More specific (varied) :

Minimum:

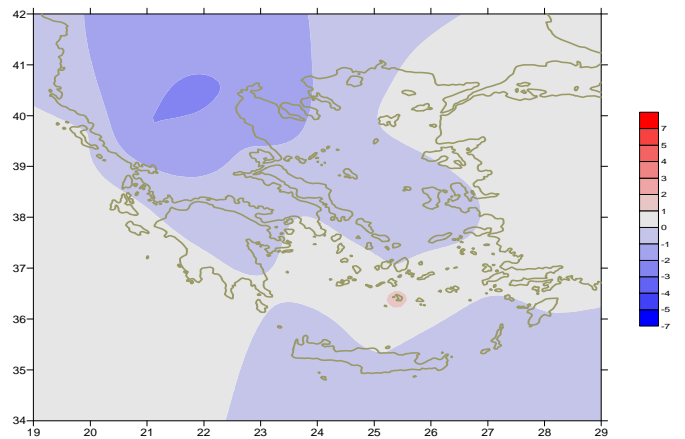
from -5°C to 12°C over north mainland,
 from -3°C to 13°C over central mainland,
 from 0°C to 16°C over rest parts.

Maximum:

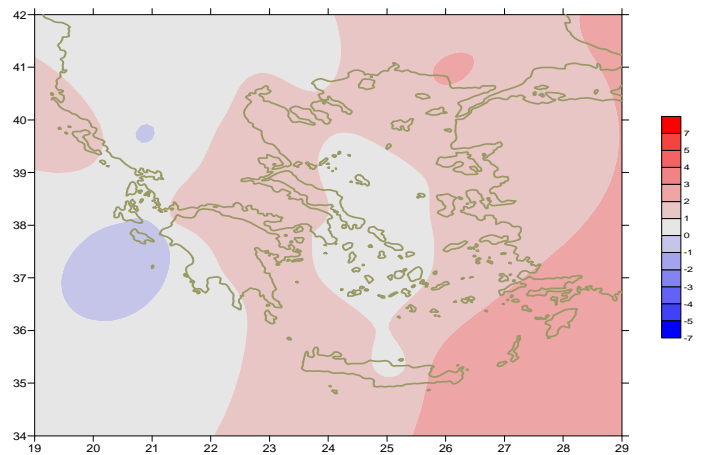
from 11°C to 13°C over north mainland,
 from 10°C to 16°C over central mainland,
 from 12°C to 24°C over rest parts.



Deviation of mean temperature from normal values



Deviation of maximum temperature from normal values



Deviation of minimum temperature from normal values



Precipitation

First Decameron

Remarkable precipitation mainly over north mainland and Northeastern parts of Aegean sea.

More specific:

50mm in Chrisoupoli, 40mm in Alexandroupoli, 37mm in Konitsa, 44mm in Desfina (6/3), 107mm in Limnos, 55mm in Skyros, 52mm in Karistos, 39mm in Leonidio, 21mm in Skiathos (7/3), 19mm in Kos (8/3), 31mm in Souda (10 /3).

Second Decameron

Local precipitation mainly over eastern mainland and Aegean sea.

More specific:

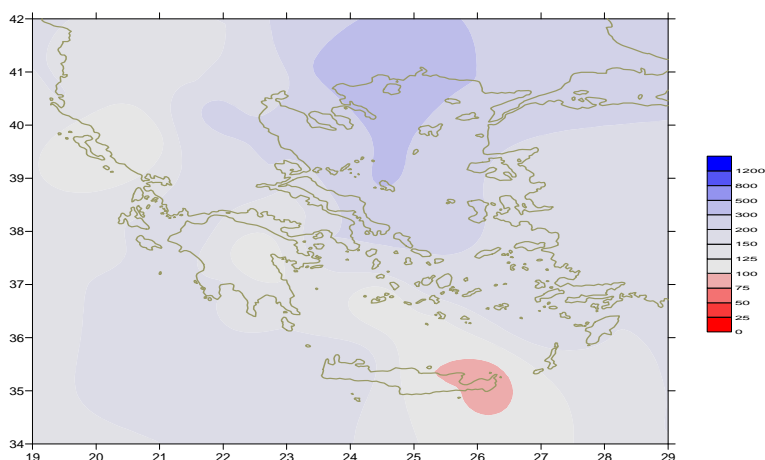
18mm in Kithira (11/3), 24mm in Tripoli, 23mm in Hellinikon, 22mm in Kalamata, 24mm in Spata (13/3), 29mm in Samos, 18mm in Chios (14/3).

Third Decameron

Locally strong rainfalls, thunderstorms and snowfalls over mountains.

More specific:

24mm in Konitsa (23/3), 39mm in Astros, 37mm in Leonidio (26/3), 33mm in Edessa, 33mm in Preveza (27/3), 37mm in Zakynthos, 22mm in Karpathos (27 /3), 33mm in Astipalea, 35mm in Kastelorizo (29 /3).



Deviation of monthly precipitation height from normal values (%)

TABLE OF MEAN VALUES

STATION	Longitude	Latitude	Tmean	TX	TN	RR	INST
SERRES	23,53	41,07	9,2	13,5	4,7	109	72
FLORINA	21,40	40,78					
KASTORIA	21,27	40,45	6,2	10,1	1,5	131	105
TRIKALA_IMATHIAS	22,55	40,60					
THESSALONIKI	22,97	40,52	9,4	12,3	5,8	87	116
CHRYSOUPOLI	24,62	40,92	9,1	11,9	6,1	184	112
ALEXANDROUPOLI	25,95	40,85	9,2	12,5	5,8	142	134
KOZANI	21,83	40,28	5,8	9,4	2,3	94	
KERKYRA	19,92	39,62	12,5	16,3	8,3	94	142
IOANNINA	20,82	39,70	8,8	12,8	3,1	81	130
PREVEZA	20,76	38,91	12,8	16	9,2	99	
TRIKALA_THESSALIAS	21,77	39,52					
LARISA	22,45	39,65	9,3	13,4	4,9	69	92
LIMNOS	25,23	39,92	10,9	13,1	7,8	289	
ARTA	21,00	39,17					
AGHIALOS	22,78	39,21	10,2	13,7	6,1	91	115
MYTILINI	26,60	39,05	11,8	14,9	9,2	81	138
VELO	22,77	37,97					
AGRINIO	21,35	38,60					
LAMIA	22,43	38,87					
ANDRAVIDA	21,28	37,92	12,5	16,4	8,1	114	171
SKYROS	24,48	38,96	11,2	13,3	9,2	162	141
ARGOSTOLI	20,50	38,12	12,9	16,5	9,8	95	168
ARAXOS	21,42	38,15	12,5	15,7	8,9	103	185
TANAGRA	23,57	38,33	10,2	14,3	6,2	80	120
HIOS	26,13	38,35	11,9	14,7	8,6	138	149
PYRGOS	21,42	37,67					
TRIPOLI	22,40	37,52	8,2	12,5	3,8	72	100
TATOI	23,78	38,10	10,3	13,8	6,4	87	
HELLINIKO	23,73	37,90	12,6	16	9,6	90	159
ELEYSINA	23,55	38,07	12,2	15,3	8,2	62	
ZAKYNTHOS	20,88	37,75	12,5	16,7	8,1	119	149
SAMOS	26,92	37,68					
ARGOS	22,75	37,63					
KALAMATA	22,02	37,07	12,6	17,6	7,7	95	181
NAXOS	25,37	37,10	13,6	15,6	10,9	91	165
METHONI	21,70	36,82					
MHLOS	24,43	36,73					
SPATA	23,95	37,95					
KOS	27,08	36,80	13,1	15,4	11	80	
KYTHIRA	22,98	36,15					
SANTORINI	25,41	36,41	13,9	16,3	11,2	65	178
SOUDA	24,12	35,55	13	16,2	10,1	139	173
RODOS	28,08	36,40	14,7	17	12,5	115	201
MYKONOS	25,35	37,43	12,3	14,4	10,8	123	
HRAKLEIO	25,18	35,33	13,7	16,8	10,5	45	172
IERAPETRA	25,73	35,02					
SITEIA	26,10	35,21	13,6	16,1	13,2	34	158
RETHYMNO	24,50	35,36					
TYMPAKI	24,76	35,06					
KASTELI	25,33	35,18	11,3	15,4	7	58	176
KARPATOS	27,15	35,42	14,9	16,9	13,2	78	
PAROS	25,13	37,02					
SYROS	24,95	37,42	12,7	15,4	9,9	105	184
IKARIA	26,35	37,68	13	14,4	11,4	173	

TABLE OF DEVIATIONS
FROM NORMAL VALUES

STATION	TMEAN (deviation) (I)	PRECI (deviation %) (II)
SERRES	-0.5	329
FLORINA		
THESSALONIKI	-0.2	190
ALEXANDROUPOLI	0.7	272
KOZANI	-1.2	224
KERKYRA	0.4	96
IOANNINA	-0.1	83
LARISA	-0.2	190
LIMNOS		
AGHIALOS	0.2	174
MYTILINI	0	108
AGRINIO		
SKYROS	-0.5	315
ARGOSTOLI	-0.2	115
ARAXOS	0.2	173
HIOS	0.1	188
HELLINIKO	0.2	203
ZAKYNTHOS	-0.4	133
SAMOS		
KALAMATA	0.2	132
NAXOS	0.3	183
METHONI		
SANTORINI	1.2	108
SOUDA	0.4	172
RODOS	1.1	153
HERAKLIO	0.1	78
SITIA	-0.2	60

(I) deviation of mean temperature from normal values
(II) deviation of monthly precipitation height from normal values %.

Climatic Bulletin

General Description

Precipitation amounts were higher than normal values, particularly over Northeastern mainland but they were lower over North Ionian and east Creta.

The mean temperature varied close to normal values but it was slightly higher over South Aegean.

Climatic Parameters :

- ❖ **Normal Values** : normal values for various parameters (temperature, precipitation, etc) are defined as mean values calculated for 30 years. These normal values are used as basis and represent the mean situation. They can be specified in 10 daily, monthly, seasonally and yearly level and are used for the trend comparison of 10 days, month, season or year as: rainy decameron, mild winter, cool August etc.

Measurement :

- ❖ **Precipitation**
1 mm = 1 litre/m²

Table Legend :

Tmean : Mean Temperature
 TN : Minimum Temperature
 TX : Maximum Temperature
 RR : Precipitation height(mm)
 INST : Sun Duration (hours)

UTC hours (Universal Time Coordinates) in Greece :

- ❖ Winter : UTC hour = local hour - 2
- ❖ Summer : UTC hour = local hour - 3

© Hellenic National Meteorological Service
 Reproduction is prohibited without written authorization
 14 El.Venizelou 16777
 Helliniko, Athens
 Greece