



Climatic Bulletin

January 2014

 Max
temperature

 Min
temperature

 Mean
temperature

 Precipitation

 Sunshine
duration

The alternation of cold and warm periods was the first characteristic of January. However the main characteristic was the prevalence of strong rainfalls and thunderstorms in the middle of the month which caused local floods over northern parts. In parallel remarkable snowfalls recorded between 18/1 and 26/1 over east and south parts. Also strong gale force southern winds caused local damages over Aegean area.



ΕΘΝΙΚΗ
ΜΕΤΕΩΡΟΛΟΓΙΚΗ
ΥΠΗΡΕΣΙΑ

HELLENIC NATIONAL METEOROLOGICAL SERVICE



Temperature

First Decameron

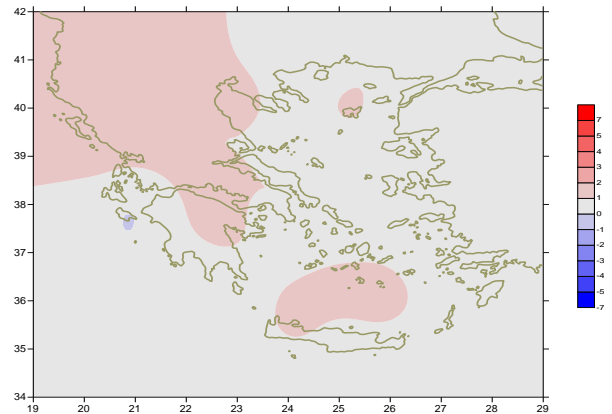
More specific (varied) :

Minimum:

from -15°C to 9°C over north mainland,
 From -9°C to 14°C over central mainland,
 from -3°C to 16°C over rest parts.

Maximum:

from 1°C to 18°C over north mainland,
 From 4°C to 22°C over central mainland,
 from 5°C to 24°C over rest parts.



Deviation of mean temperature from normal values

Second Decameron

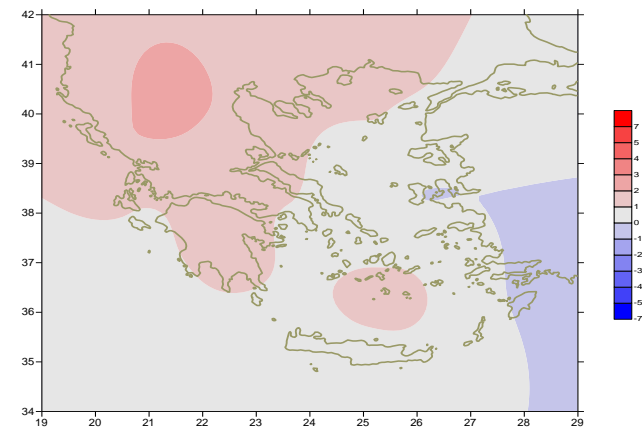
More specific (varied) :

Minimum:

from -15°C to 12°C over north mainland,
 from -5°C to 13°C over central mainland,
 From 0°C to 16°C over rest parts.

Maximum:

from -3°C to 21°C over north mainland,
 From 2°C to 24°C over central mainland,
 From 7°C to 24°C over rest parts.



Deviation of maximum temperature from normal values

Third Decameron

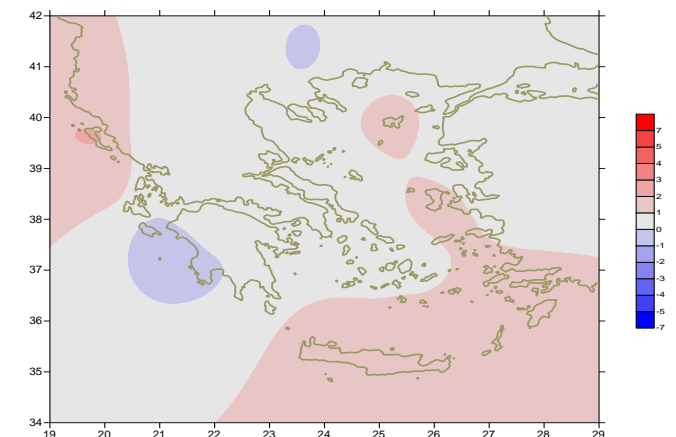
More specific (varied) :

Minimum:

from -17°C to 4°C over north mainland,
 from -8°C to 8°C over central mainland,
 from 0°C to 11°C over rest parts.

Maximum:

from -2°C to 19°C over north mainland,
 from 5°C to 17°C over central mainland,
 from 5°C to 20°C over rest parts.



Deviation of minimum temperature from normal values



Precipitation

First Decameron

Significant rainfalls .

More specific:

40mm in Konitsa, 42mm in Argostoli, 34mm in Ioannina,
32mm in Limnos at 3/1,
35mm in Icaria, 38 in Samos, 38mm in Limnos at 4/1,
40mm in Alexandroupoli at 7/1.
40mm in Santorini at 8/1, 53 in Mitilini at 10/1.

Second Decameron

Local rainfalls, thunderstorms. Remarkable snowfalls over eastern

And southern parts.

More specific:

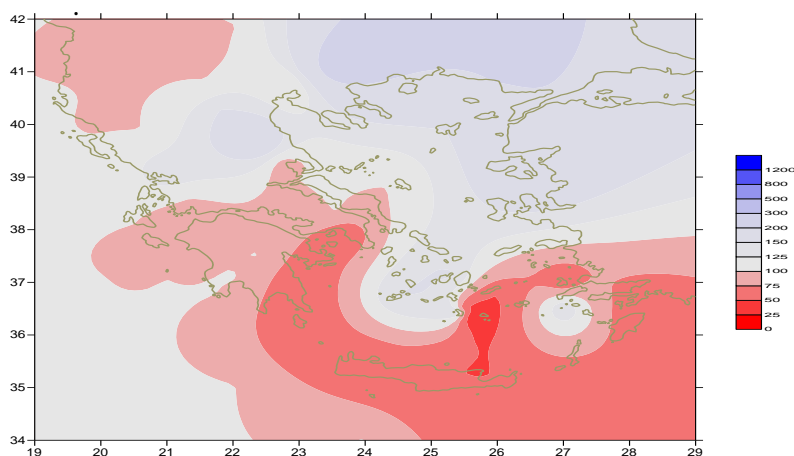
34mm in Serres, 66mm in Konitsa, 74mm in Ioannina,
23mm in Larisa at 16/1,
62mm in Mitilini, 46 in Chios, 22mm in Rodos, 22mm in Kos,
34mm in Icaria at 17/1,
25 in Argostoli . 59mm in Zakynthos , 28 in Methoni,
23mm in Argos, 21 in Spata at 20/1.

Third Decameron

Local rainfalls. A few snowfalls over eastern.

More specific:

9mm in Rodos, 6mm in Mitilini, 4mm in Kalamata at 21/1,
10mm in Skiros at 22/1,
10mm in Souda at 25/1,
7mm in Kasteli at 26/1.



**Deviation of monthly precipitation
height from normal values (%)**

STATION	Longitude	Lattitude	Tmean	TX	TN	RR	INST
SERRES	23,53	41,07	4.1	9	-0.4	83	113
FLORINA	21,40	40,78					
KASTORIA	21,27	40,45	3.5	8.2	-2	50	135
TRIKALA_IMATHIAS	22,55	40,60					
THESSALONIKI	22,97	40,52	6.5	10.4	2.2	28	153
CHRYSOUPOLI	24,62	40,92	5.8	9.6	1.9	48	127
ALEXANDROUPOLI	25,95	40,85	5.8	9.6	1.7	100	124
KOZANI	21,83	40,28	3.9	8.1	-1	52	
KERKYRA	19,92	39,62	11.2	15.1	7.2	112	110
IOANNINA	20,82	39,70	5.9	12.5	0.5	141	088
PREVEZA	20,76	38,91	10.6	14.2	7.3	152	
TRIKALA_THESSALIAS	21,77	39,52					
LARISA	22,45	39,65	6.1	11.1	1	48	130
LIMNOS	25,23	39,92	8.6	11.7	5.6	75	124
ARTA	21,00	39,17					
AGHIALOS	22,78	39,21	7.4	12.2	3.2	36	147
MYTILINI	26,60	39,05	9.3	12.1	6.6	204	128
VELO	22,77	37,97					
AGRINIO	21,35	38,60					
LAMIA	22,43	38,87					
ANDRAVIDA	21,28	37,92	10.7	14.8	6.3	77	145
SKYROS	24,48	38,96	10.4	12.8	7.9	52	091
ARGOSTOLI	20,50	38,12	12.3	15.6	9.4	89	146
ARAXOS	21,42	38,15	10.9	14.9	6.6	60	161
TANAGRA	23,57	38,33	8.5	13	4.1	49	131
HIOS	26,13	38,35	10.1	12.8	7.5	119	114
PYRGOS	21,42	37,67					
TRIPOLI	22,40	37,52	6.5	11.4	1.6	114	155
TATOI	23,78	38,10	8.1	12.4	3.7	38	
HELLINIKO	23,73	37,90	10.8	13.8	7.3	10	148
ELEVSINA	23,55	38,07	9.8	14.2	5.2	36	
ZAKYNTHOS	20,88	37,75	11.2	14.9	7.5	99	130
SAMOS	26,92	37,68					
ARGOS	22,75	37,63					
KALAMATA	22,02	37,07	10.6	16.4	5.4	102	152
NAXOS	25,37	37,10	12.6	14.9	7	94	122
METHONI	21,70	36,82					
MHLOS	24,43	36,73					
SPATA	23,95	37,95	10.2	13.2	5.2	32	
KOS	27,08	36,80	11	13.4	8.7	63	
KYTHIRA	22,98	36,15					
SANTORINI	25,41	36,41	12.8	15.2	10.2	90	163
SOUDA	24,12	35,55	11.9	15	9.2	56	130
RODOS	28,08	36,40	12.4	14.7	9.9	68	154
MYKONOS	25,35	37,43	10.9	13.1	9	65	
HERAKLEIO	25,18	35,33	12.8	15.8	10.4	56	131
IERAPETRA	25,73	35,02					
SITEIA	26,10	35,21					
RETHYMNO	24,50	35,36					
TYMPAKI	24,76	35,06					
KASTEI	25,33	35,18	10.1	13	6.4	52	137
KARPATOS	27,15	35,42	13.2	15.7	11	26	
PAROS	25,13	37,02	11.8	14.3	9.3	80	156
SYROS	24,95	37,42	11.7	14.2	9.2	82	137
IKARIA	26,35	37,68					

TABLE OF DEVIATIONS
FROM NORMAL VALUES

STATION	TMEAN (deviation) (I)	PRECI (deviation %) (II)
SERRES	0.3	235
FLORINA		
THESSALONIKI	1.5	76
ALEXANDROUPOLI	1	166
KOZANI	1.9	132
KERKYRA	1.6	85
IOANNINA	1.3	108
LARISA	1	162
LIMNOS	1.1	104
AGHIALOS	1	75
MYTILINI	0	157
AGRINIO		
SKYROS	0.5	67
ARGOSTOLI	0.7	76
ARAXOS	0.8	62
HIOS	0.5	102
HELLINIKO	0.6	22
ZAKYNTHOS	-0.1	66
SAMOS		
KALAMATA	0.4	90
NAXOS	0.6	132
METHONI		
SANTORINI	1.5	140
SOUDA	1.1	40
RODOS	0.7	46
HERAKLIO	0.8	61
SITIA		

(I) deviation of mean temperature from normal values

(II) deviation of monthly precipitation height from normal values %.

Climatic Bulletin

General Description

Precipitation amounts were lower than normal values everywhere with exception of parts of Heparus and Macedonia where they were higher enough.

The mean temperature varied slightly higher than normal values over every part of Greece.

Climatic Parameters :

- ❖ **Normal Values** : normal values for various parameters (temperature, precipitation, etc) are defined as mean values calculated for 30 years. These normal values are used as basis and represent the mean situation. They can be specified in 10 daily, monthly, seasonal and yearly level and are used for the trend comparison of 10 days, month, season or year as: rainy decameron, mild winter, cool August etc.

Measurement :

- ❖ **Precipitation**
1 mm = 1 litre/m²

Table Legend :

Tmean : Mean Temperature
 TN : Minimum Temperature
 TX : Maximum Temperature
 RR : Precipitation height(mm)
 INST : Sun Duration (hours)

UTC hours (Universal Time Coordinates) in Greece :

- ❖ Winter : UTC hour = local hour - 2
- ❖ Summer : UTC hour = local hour - 3

© Hellenic National Meteorological Service
 Reproduction is prohibited without written authorization
 14 El.Venizelou 16777
 Helliniko, Athens
 Greece