



Climatic Bulletin

December 2016

 **Max
temperature**

 **Min
temperature**

 **Mean
temperature**

 **Precipitation**

 **Sunshine
duration**

December was a dry month for west and north parts of Greece. Contrary to that the precipitation amounts exceeded normal values over Crete, Evia and a few other islands of central and south Aegean area. In parallel heavy and continuous snowfalls recorded over mountains of eastern Thessaly, Evia, Peloponnese and Crete. Also during last ten days strong gale force north winds prevailed over eastern parts.



ΕΘΝΙΚΗ
ΜΕΤΕΩΡΟΛΟΓΙΚΗ
ΥΠΗΡΕΣΙΑ

HELLENIC NATIONAL METEOROLOGICAL SERVICE



Temperature

First 10-day period

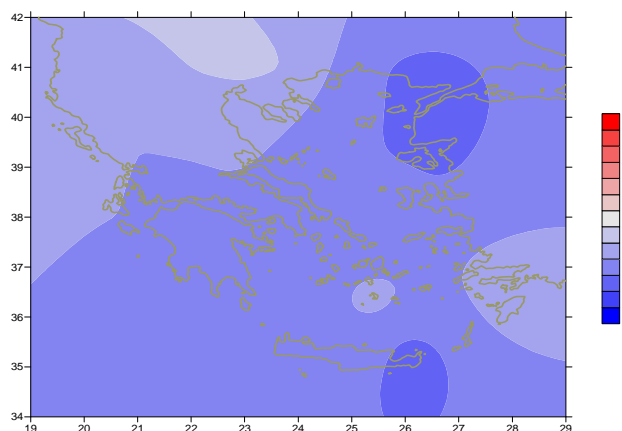
More specific (varied) :

Minimum:

from -10°C to 6°C over north mainland,
 from -4°C to 10°C over central mainland,
 from 3°C to 15°C over rest parts.

Maximum:

from 5°C to 16°C over north mainland,
 from 6°C to 17°C over central mainland,
 from 8°C to 21°C over rest parts.



Deviation of mean temperature from normal values

Second 10-day period

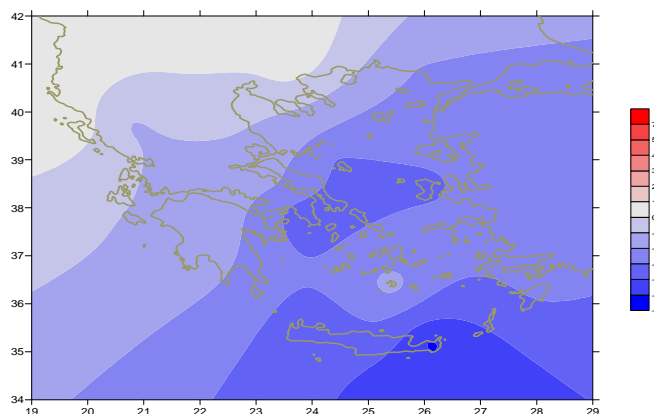
More specific (varied) :

Minimum:

from -11°C to 6°C over north mainland,
 from -8°C to 8°C over central mainland,
 from -3°C to 14°C over rest parts.

Maximum:

from 5°C to 16°C over north mainland,
 from 6°C to 20°C over central mainland,
 from 7°C to 21°C over rest parts.



Deviation of maximum temperature from normal values

Third 10-day period

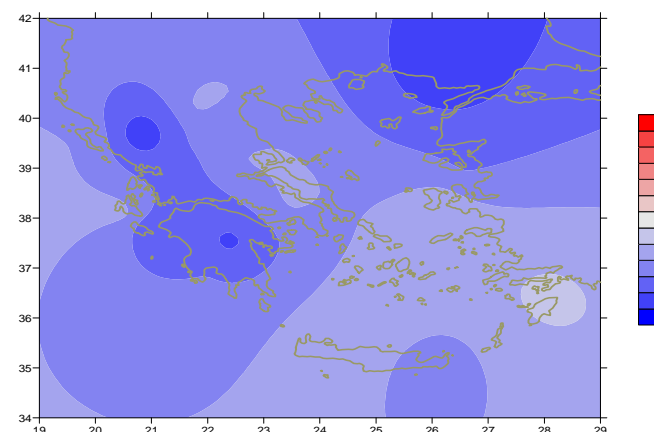
More specific (varied) :

Minimum:

from -10°C to 5°C over north mainland,
 from -9°C to 7°C over central mainland,
 from -4°C to 12°C over rest parts.

Maximum:

from 0°C to 13°C over north mainland,
 from 3°C to 16°C over central mainland,
 from 6°C to 16°C over rest parts.



Deviation of minimum temperature from normal values



P r e c i p i t a t i o n

First 10-day period

Remarkable local precipitation.

More specific:

*26mm in Kastelorizo (1/12),
15mm in Argostoli, 51mm in Zakynthos,
22mm in Kos (4/12),
21mm in Zakynthos, 19mm in Souda (5/12),
26mm in Adravida (6/12).*

Second 10-day period

Remarkable local precipitation over eastern parts.

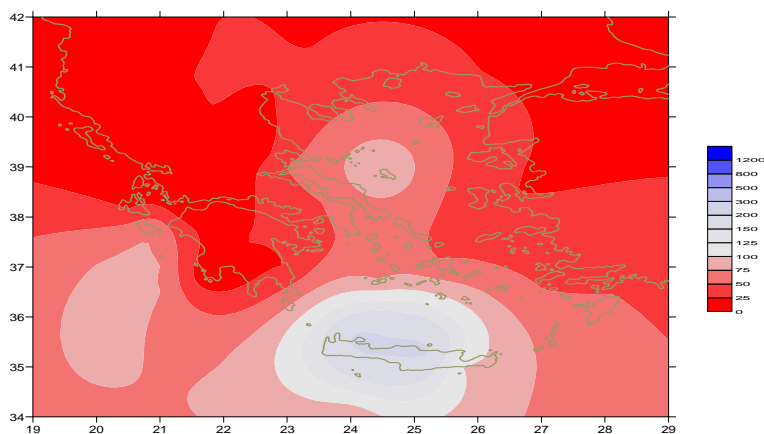
*12mm in Skyros,
11mm in Iraklion, 7mm in Syros (13/12),
6mm in Skiathos, 8mm in Aghialos, 14mm in Souda (15/12).*

Third 10-day period

Remarkable precipitation mainly over Aegean area.
Significant snowfalls over mountainous Creta.

More specific:

*19mm in Kasteli (22/12),
12mm in Rodos, 36mm in Paros (23/12),
18mm in Kastelorizo, 20mm in Rodos (24/12),
12mm in Chios, 27mm in Souda, 14mm in Mikonos,
16mm in Iraklion (28/12),
16mm in Tanagra, 12mm in Hellinikon, 18mm in Elefsina, 33mm in Souda,
42mm in Iraklion, 24mm in Kasos (29/12),
10mm in Syros, 8mm in Paros (30/12),
24mm in Skiros, 13mm in Iraklion,
9mm in Kasteli (31/12).*



*Deviation of monthly precipitation
height from normal values (%)*

TABLE OF MEAN VALUES

STATION	Longitude	Latitude	Tmean	TX	TN	RR	INST
SERRES	23,53	41,07	4	10,1	-1,8		160
FLORINA	21,40	40,78					
KASTORIA	21,27	40,45	1,8	8,2	-4	4	145
TRIKALA_IMATHIAS	22,55	40,60					
THESSALONIKI	22,97	40,52	5,6	10,4	0,7		170
CHRYSOUPOLI	24,62	40,92	4,2	9,5	-1,2	6	173
ALEXANDROUPOLI	25,95	40,85	3,8	8,6	-1,3	6	165
KOZANI	21,83	40,28	2,4	7,5	-1,6	9	
KERKYRA	19,92	39,62	9,8	15,7	4,5	6	191
IOANNINA	20,82	39,70	3,8	10,4	-3,3	1	132
PREVEZA	20,76	38,91	9,1	13,5	5,8		
TRIKALA_THESSALIAS	21,77	39,52					
LARISA	22,45	39,65	4,6	10	-1,1	5	130
LIMNOS	25,23	39,92					
ARTA	21,00	39,17					
AGHIALOS	22,78	39,21	6,3	11,2	2,5	17	147
MYTILINI	26,60	39,05	8,1	10,9	5,5	16	179
VELO	22,77	37,97					
AGRINIO	21,35	38,60					
LAMIA	22,43	38,87					
ANDRAVIDA	21,28	37,92	8,3	14	3,3	39	156
SKYROS	24,48	38,96	8,8	10,9	6,8	57	108
ARGOSTOLI	20,50	38,12	11,1	14,9	8,3	26	168
ARAXOS	21,42	38,15	8,9	13,8	4,3	8	190
TANAGRA	23,57	38,33	6,7	11,4	3,2	31	130
HIOS	26,13	38,35	8,6	11,2	5,9	30	139
PYRGOS	21,42	37,67					
TRIPOLI	22,40	37,52	3,7	9,5	-1,5	9	137
TATOI	23,78	38,10	6,5	10,4	3,2	32	
HELLINIKO	23,73	37,90	9	11,7	6,2	23	162
ELEYSINA	23,55	38,07	8,5	12,3	4,5	26	
ZAKYNTHOS	20,88	37,75	10,1	14,5	6	97	170
SAMOS	26,92	37,68					
ARGOS	22,75	37,63					
KALAMATA	22,02	37,07	8,9	15,4	4,1	9	186
NAXOS	25,37	37,10	11,4	13,2	9,4	24	116
METHONI	21,70	36,82					
MHLOS	24,43	36,73					
SPATA	23,95	37,95	8,5	11,5	3,7	23	
KOS	27,08	36,80	9,6	11,7	7,8	43	
KYTHIRA	22,98	36,15					
SANTORINI	25,41	36,41	11,1	13,4	9,1	52	157
SOUDA	24,12	35,55	10,2	12,6	8	203	84
RODOS	28,08	36,40	12	13,9	9,7	68	184
MYKONOS	25,35	37,43	9,2	11,2	7,9	47	
HRAKLEIO	25,18	35,33	11,4	13,7	9,1	164	94
IERAPETRA	25,73	35,02					
SITEIA	26,10	35,21	10,5	12,2	8,5	69	107
RETHYMNO	24,50	35,36					
TYMPAKI	24,76	35,06					
KASTELI	25,33	35,18	8,1	11,6	5,3	182	133
KARPATOS	27,15	35,42	12,5	14,8	10,6	39	
PAROS	25,13	37,02	10,3	12,3	8,6	68	138
SYROS	24,95	37,42	10,2	12,3	7,9	55	147
IKARIA	26,35	37,68					

**TABLE OF DEVIATIONS
FROM NORMAL VALUES**

STATION	TMEAN (deviation) (I)	PRECI (deviation %) (II)
SERRES	-0.9	0
FLORINA		
THESSALONIKI	-1.1	0
ALEXANDROUPOLI	-3.2	7
KOZANI	-1.2	17
KERKYRA	-1.3	3
IOANNINA	-2	1
LARISA	-1.7	10
LIMNOS		
AGHIALOS	-1.7	27
MYTILINI	-3.2	11
AGRINIO		
SKYROS	-2.9	73
ARGOSTOLI	-1.8	21
ARAXOS	-2.6	6
HIOS	-2.5	26
HELLINIKO	-3	35
ZAKYNTHOS	-2.7	57
SAMOS		
KALAMATA	-2.7	6
NAXOS	-2.3	35
METHONI		
SANTORINI	-1.7	86
SOUDA	-2.4	216
RODOS	-1.4	47
HERAKLIO	-2.4	212
SITIA	-3.5	78

(I) deviation of mean temperature from normal values
(II) deviation of monthly precipitation height from normal values %.

Climatic Bulletin

General Description

Precipitation amounts were lower enough than normals over most parts with the exception Creta island and few parts of Aegean area. The mean temperature varied lower than normal values in general.

Climatic Parameters :

- ❖ **Normal Values** : normal values for various parameters (temperature, precipitation, etc) are defined as mean values calculated for 30 years. These normal values are used as basis and represent the mean situation. They can be specified in 10 daily, monthly, seasonally and yearly level and are used for the trend comparison of 10 days, month, season or year as: rainy decameron, mild winter, cool August etc.

Measurement :

- ❖ **Precipitation**
1 mm = 1 litre/m²

Table Legend :

Tmean : Mean Temperature
 TN : Minimum Temperature
 TX : Maximum Temperature
 RR : Precipitation height(mm)
 INST : Sun Duration (hours)

UTC hours (Universal Time Coordinates) in Greece :

- ❖ Winter : UTC hour = local hour - 2
- ❖ Summer : UTC hour = local hour - 3

© Hellenic National Meteorological Service
 Reproduction is prohibited without written authorization
 14 El.Venizelou 16777
 Helliniko, Athens
 Greece