




Climatic Bulletin

July 2019

 **Max
temperature**

 **Min
temperature**

 **Mean
temperature**

 **Precipitation**

 **Sunshine
duration**

July was very hot from the beginning with max values of temperature up to 41 degrees Centigrade locally over central mainland. In contrast during the following days the temperatures declined but gradually rose again till the end of month.

However the main characteristics were: the very strong local rainfalls and thunderstorms which recorded over central and north mainland on the 10th and 14th of July but also the intensive precipitation which affected the island of Crete and the area eastwards till the island of Rodos. The most important fact was the loss of human lives because of the severe squall which swept the area of Chalkidiki on the 10th of July.



Temperature

First 10-day period

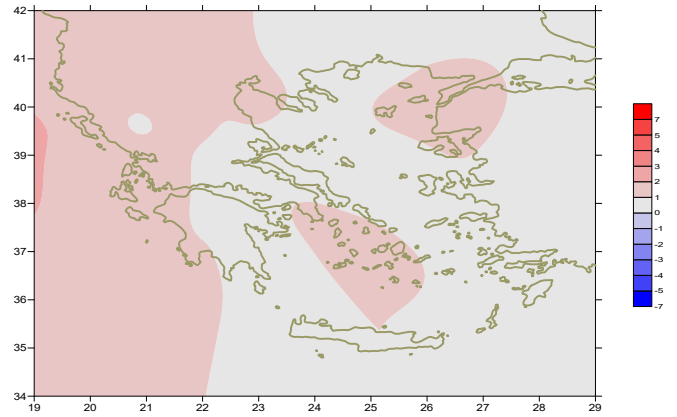
More specific (varied) :

Minimum:

from 12°C to 24°C over north mainland,
 from 16°C to 27°C over central mainland,
 from 19°C to 26°C over rest parts.

Maximum:

from 29°C to 41°C over north mainland,
 from 27°C to 41°C over central mainland,
 from 26°C to 38°C over rest parts.



Deviation of mean temperature from normal values

Second 10-day period

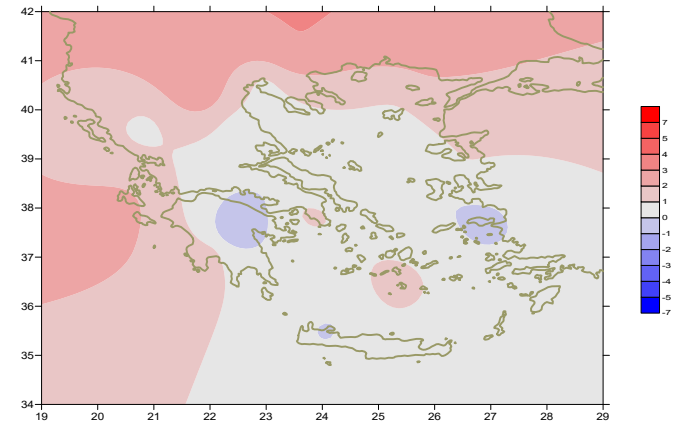
More specific (varied) :

Minimum:

from 9°C to 22°C over north mainland,
 from 13°C to 28°C over central mainland,
 from 17°C to 28°C over rest parts.

Maximum:

from 24°C to 35°C over north mainland,
 from 26°C to 36°C over central mainland,
 from 26°C to 35°C over rest parts.



Deviation of maximum temperature from normal values

Third 10-day period

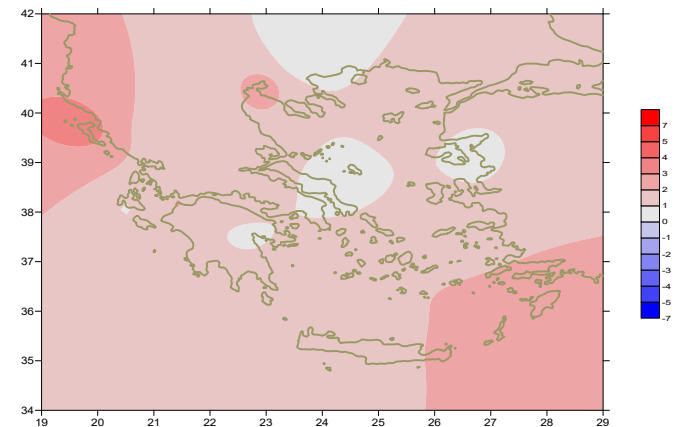
More specific (varied) :

Minimum:

from 11°C to 24°C over north mainland,
 from 15°C to 28°C over central mainland,
 from 19°C to 26°C over rest parts.

Maximum:

from 28°C to 38.5°C over north mainland,
 from 29°C to 38.6°C over central mainland,
 from 28°C to 37°C over rest parts.



Deviation of minimum temperature from normal values



P r e c i p i t a t i o n

First 10-day period

Locally significant amounts of precipitation at the end.

More specific:

10mm in Doxato, 5mm in Kavala (5/7),
5mm in N. Filadelfeia (9/7),
20mm in Alexandroupoli, 11mm in Kavala, 9mm in Ormenio,
15mm in Doxato, 9mm in Serres, 8mm in Florina (10/7).

Second 10-day period

Locally high amounts of precipitation.

More specific:

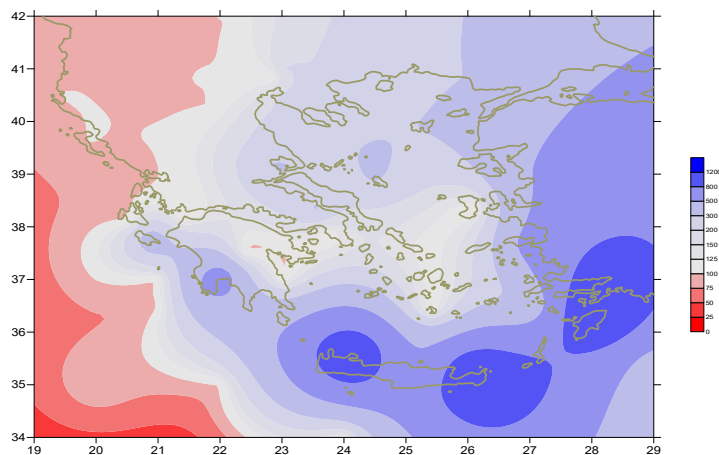
18mm in Thessaloniki, 18mm in Florina, 25mm in Skiathos, 35mm in Kimi,
11mm in Alexandroupoli, 17mm in Limnos (11/7),
23mm in Kavala, 46mm in Preveza, 107mm in Antirio, 21mm in Lamia (14/7),
31mm in Florina, 24mm in Kastoria, 21mm in Kalamata, 18mm in Larisa,
34mm in Sofades, 24mm in Kranea (16/7),
59mm in Skiathos, 22mm in Aghialos, 17mm in Tithorea, 41mm in Karistos,
28mm in Sitia, 72mm in Souda, 18mm in Rodos (17/7).

Third 10-day period

Locally low amounts of precipitation.

More specific:

4mm in Ioannina (23/7), 5mm in Ormenio (24/7),
4mm in Sofades (28/7), 2mm in Serres (30/7).



**Deviation of monthly precipitation height
from normal values (%)**

TABLE OF MEAN VALUES

STATION	Longitude	Latitude	Tmean	TX	TN	RR	INST
SERRES	23,53	41,07	27,5	34,9	18,5	50	330
FLORINA	21,40	40,78					
KASTORIA	21,27	40,45	24,4	30,5	14,6	45	316
TRIKALA_IMATHIAS	22,55	40,60					
THESSALONIKI	22,97	40,52	28,2	32,1	21,1	48	355
CHRYSOUPOLI	24,62	40,92	26,1	29,7	19,9	58	337
ALEXANDROUPOLI	25,95	40,85	26,6	31,3	18,8	46	351
KOZANI	21,83	40,28	26	39,9	16,6	22	
KERKYRA	19,92	39,62	28,3	32,3	21,7	7	367
IOANNINA	20,82	39,70	25,6	31,7	16,4	27	335
PREVEZA	20,76	38,91	27	30,9	21	49	
TRIKALA_THESSALIAS	21,77	39,52					
LARISA	22,45	39,65	28	33,5	19	35	318
LIMNOS	25,23	39,92	26,6	29,7	21,3	25	358
ARTA	21,00	39,17					
AGHIALOS	22,78	39,21	27,6	31,6	19,8	38	344
MYTILINI	26,60	39,05	27,5	31,4	22,3	10	400
VELO	22,77	37,97					
AGRINIO	21,35	38,60					
LAMIA	22,43	38,87					
ANDRAVIDA	21,28	37,92	27,3	31,9	19,6	8	376
SKYROS	24,48	38,96	25,9	28	22,1	19	329
ARGOSTOLI	20,50	38,12	27,3	30,9	21,6	8	376
ARAXOS	21,42	38,15	28	32,2	20,7	4	342
TANAGRA	23,57	38,33	27,7	32,2	19	22	352
HIOS	26,13	38,35	27	30	22,1		377
PYRGOS	21,42	37,67					
TRIPOLI	22,40	37,52	24,5	29,6	15,2	16	331
TATOI	23,78	38,10	27,2	31,6	20,3	8	
HELLINIKO	23,73	37,90	29	32,8	23,8	6	366
ELEY SINA	23,55	38,07	29,6	33,8	23,5	5	
ZAKYNTHOS	20,88	37,75	28,5	32,6	21,6	20	384
SAMOS	26,92	37,68	28,5	32,2	23,6	4	
ARGOS	22,75	37,63					
KALAMATA	22,02	37,07	27,7	32,6	19,5	22	355
NAXOS	25,37	37,10					
METHONI	21,70	36,82					
MHLOS	24,43	36,73					
SPATA	23,95	37,95	27,7	31,3	20,6		
KOS	27,08	36,80	26,8	30,6	22,8	0	
KYTHIRA	22,98	36,15					
SANTORINI	25,41	36,41	26,9	29,7	23,7	0	359
SOUDA	24,12	35,55	26,9	30,2	22,1	72	379
RODOS	28,08	36,40	27,8	31,1	24,7	18	391
MYKONOS	25,35	37,43	26,2	28,7	22,8	2	
HRAKLEIO	25,18	35,33	27,1	29,3	22,7	5	388
IERAPETRA	25,73	35,02					
SITEIA	26,10	35,21	26,1	28,8	24,6	25	396
RETHYMNO	24,50	35,36					
TYMPAKI	24,76	35,06					
KASTELI	25,33	35,18	25,6	29,7	20,1	5	346
KARPATIOS	27,15	35,42	26,2	29,6	23,5	2	
PAROS	25,13	37,02	26,4	29,2	22,5	9999	374
SYROS	24,95	37,42	26,7	29,7	23,6	11	369
IKARIA	26,35	37,68					

**TABLE OF DEVIATIONS
FROM NORMAL VALUES**

STATION	TMEAN (deviation) (I)	PRECI (deviation %) (II)
SERRES	1.4	160
FLORINA		
THESSALONIKI	1.7	188
ALEXANDROUPOLI	1	261
KOZANI	2	56
KERKYRA	1.9	95
IOANNINA	0.8	95
LARISA	0.9	172
LIMNOS	1.1	243
AGHIALOS	0.9	214
MYTILINI	1.1	435
AGRINIO		
SKYROS	0.6	322
ARGOSTOLI	1.8	52
ARAXOS	1.4	93
HIOS	0.6	100
HELLINIKO	1.2	107
ZAKYNTHOS	1.8	400
SAMOS	0.1	571
KALAMATA	1.2	629
NAXOS		
METHONI		
SANTORINI	1.5	-
SOUDA	0.5	5.500
RODOS	0.9	18.000
HERAKLIO	1	500
SITIA	0.1	1040

(I) deviation of mean temperature from normal values
 (II) deviation of monthly precipitation height from normal values %.

Climatic Bulletin

General Description

Precipitation amounts were higher enough than normal values over the islands of Crete and Rodos and over most parts of mainland as well.
The mean temperature varied higher than normals almost everywhere.

Climatic Parameters :

- ❖ **Normal Values** : normal values for various parameters (temperature, precipitation, etc) are defined as mean values calculated for 30 years. These normal values are used as basis and represent the mean situation. They can be specified in 10 daily, monthly, seasonally and yearly level and are used for the trend comparison of 10 days, month, season or year as: rainy decameron, mild winter, cool August etc.

Measurement :

- ❖ **Precipitation**
1 mm = 1 litre/m²

Table Legend :

Tmean : Mean Temperature
TN : Minimum Temperature
TX : Maximum Temperature
RR : Precipitation height(mm)
INST : Sun Duration (hours)

UTC hours (Universal Time Coordinates) in Greece :

- ❖ Winter : UTC hour = local hour - 2
- ❖ Summer : UTC hour = local hour - 3

© Hellenic National Meteorological Service
Reproduction is prohibited without written authorization
14 El.Venizelou 16777
Helliniko, Athens
Greece