




Climatic Bulletin

August 2020

 **Max
temperature**

 **Min
temperature**

 **Mean
temperature**

 **Precipitation**

 **Sunshine
duration**

In August the maximum values of temperature climbed up to 40 degrees of Celsius scale on the first and last day. In the meantime long lasting intense rainfalls and thunderstorms affected central mainland and mainly central parts of Evia island on the 9th of month. Specifically in Evia the huge amounts of precipitation caused ruinous floods with the tragic result of human losses and terrible havoc.



Temperature

First 10-day period

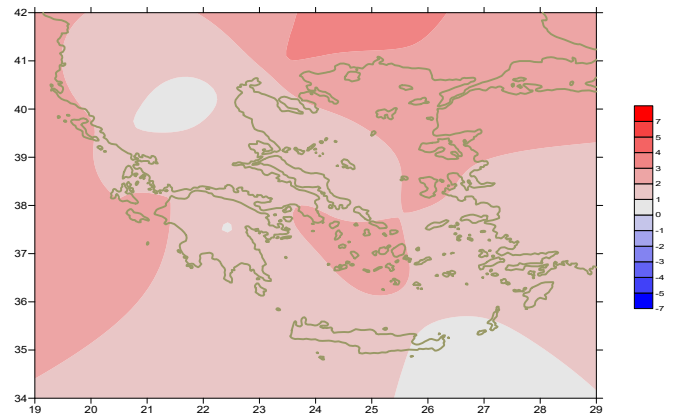
More specific (varied) :

Minimum:

from 12°C to 27°C over north mainland,
 from 16°C to 29°C over central mainland,
 from 14°C to 27°C over rest parts.

Maximum:

from 29°C to 39°C over north mainland,
 from 29°C to 41°C over central mainland,
 from 27°C to 41.4°C over rest parts.



Deviation of mean temperature from normal values

Second 10-day period

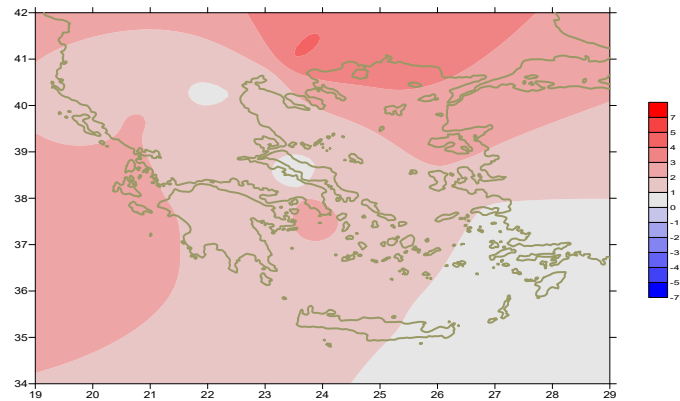
More specific (varied) :

Minimum:

from 13°C to 24°C over north mainland,
 from 17°C to 25°C over central mainland,
 from 14°C to 26°C over rest parts.

Maximum:

from 27°C to 37°C over north mainland,
 from 27°C to 38°C over central mainland,
 from 26°C to 33°C over rest parts.



Deviation of maximum temperature from normal values

Third 10-day period

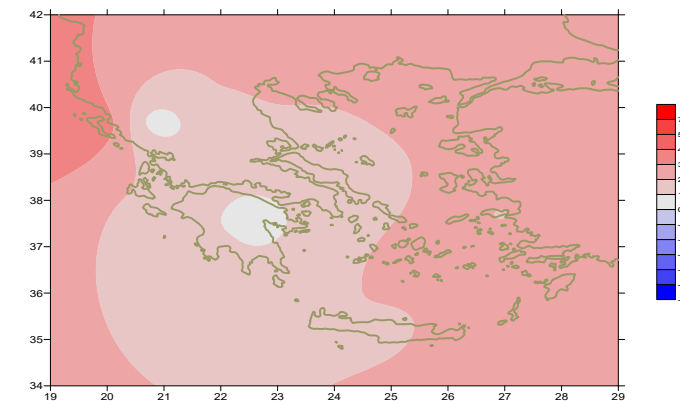
More specific (varied) :

Minimum:

from 11°C to 23°C over north mainland,
 from 17°C to 27°C over central mainland,
 from 15°C to 26°C over rest parts.

Maximum:

from 29°C to 40°C over north mainland,
 from 31°C to 40°C over central mainland,
 from 28°C to 35°C over rest parts.



Deviation of minimum temperature from normal values



Precipitation

First 10-day period

Locally very high amounts of precipitation.
More specific:

41mm in Kerkira (5/8), 29mm in Thessaloniki,
60mm in Florina, 60mm in Kastoria, 38mm in Evia,
31mm in Konitsa, 17mm in Larisa,
36mm in Kranea, 26mm in Aghialos, 18mm in Lamia (6/8),
14mm in Hellinikon (7/8),
26mm in Lamia, 29mm in Elefsina, 10mm in Tatoi (8/8),
46mm in Thessaloniki, 17mm in Kozani, 30mm in Desfina,
28mm in Tithorea, 16mm in Tanagra (9/8),
6mm in Samos (10/8).

Second 10-day period

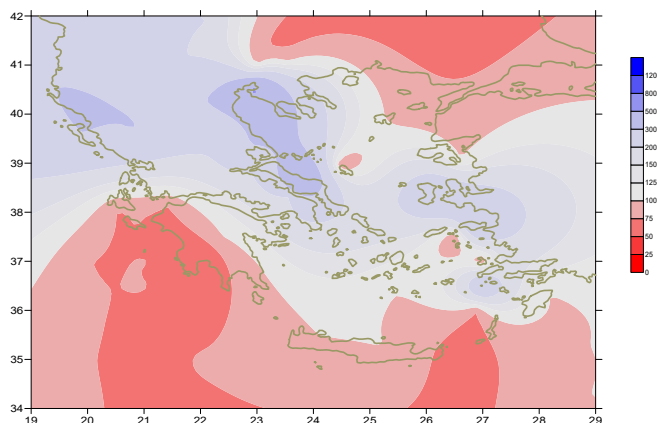
Remarkable amounts of precipitation only over north parts.
More specific:

4mm in Kozani, 2mm in Kastoria (15/8), 8mm in Doxato (16/8),
4mm in Xanthi, 12mm in Edessa, 4mm in Larisa (19/8),
5mm in Alexandroupoli, 5mm in Soufli, 7mm in Kavala (20/8).

Third 10-day period

Local precipitation over north parts.
More specific:

9mm in Thessaloniki, 3mm in Doxato, 4mm in Edessa (25/8),
12mm in Thessaloniki, 5mm in Aghialos, 5mm in Skiros (26/8).



**Deviation of monthly precipitation height
from normal values (%)**

TABLE OF MEAN VALUES

STATION	Longitude	Latitude	Tmean	TX	TN	RR	INST
RRES	23,53	41,07	28	35,2	19,6	26	314
FLORINA	21,40	40,78					
KASTORIA	21,27	40,45	23,9	30,6	15,3	87	303
TRIKALA_IMATHIAS	22,55	40,60					
THESSALONIKI	22,97	40,52	27,2	32	20,3	111	334
CHRYSOUPOLI	24,62	40,92	26,7	30,9	20,5	14	326
ALEXANDROUPOLI	25,95	40,85	28,1	33,4	20,1	6	357
KOZANI	21,83	40,28	24,1	29,8	17,2	82	
KERKYRA	19,92	39,62	28,3	32,8	22,3	45	368
IOANNINA	20,82	39,70	25,1	32,9	15,4	51	294
PREVEZA	20,76	38,91					
TRIKALA_THESSALIAS	21,77	39,52					
LARISA	22,45	39,65	27,3	33,7	18,8	28	290
LIMNOS	25,23	39,92	27,1	30,9	22,5	0	373
ARTA	21,00	39,17					
AGHIALOS	22,78	39,21	27,3	31,9	20,1	36	335
MYTILINI	26,60	39,05	28	32	23,4	0	363
VELO	22,77	37,97					
AGRINIO	21,35	38,60					
LAMIA	22,43	38,87					
ANDRAVIDA	21,28	37,92	27,7	33	20,7		332
SKYROS	24,48	38,96	25,9	28,3	22,6	5	354
ARGOSTOLI	20,50	38,12	27,7	31,6	22,9		369
ARAXOS	21,42	38,15	28,6	33,1	21,2		342
TANAGRA	23,57	38,33	27,7	32,2	19,3	16	363
HIOS	26,13	38,35	27,8	31,1	22,8	2	370
PYRGOS	21,42	37,67					
TRIPOLI	22,40	37,52	24,8	31,4	14,8	14	308
TATOI	23,78	38,10	27,3	32,1	20,7	8	
HELLINIKO	23,73	37,90	29,8	33,7	23,9	14	365
ELEYSINA	23,55	38,07	29,6	33,9	23,8	38	
ZAKYNTHOS	20,88	37,75	29	33,3	22		381
SAMOS	26,92	37,68	29	32,8	23,8	6	
ARGOS	22,75	37,63					
KALAMATA	22,02	37,07	27,8	32,9	19,7	1	297
NAXOS	25,37	37,10					
METHONI	21,70	36,82					
MHLOS	24,43	36,73					
SPATA	23,95	37,95	27,8	31,7	21,1		
KOS	27,08	36,80	27,3	31,6	23,8	2	
KYTHIRA	22,98	36,15					
SANTORINI	25,41	36,41	27	29,3	24,3	0	341
SOUDA	24,12	35,55	27,4	31,4	22,5	0	376
RODOS	28,08	36,40	28,3	30,9	25,5	0	371
MYKONOS	25,35	37,43	27	29,3	24,4	0	
HRAKLEIO	25,18	35,33	27,5	29,6	23,4	0	379
IERAPETRA	25,73	35,02					
SITEIA	26,10	35,21	26,4	28,7	25	0	302
RETHYMNO	24,50	35,36					
TYMPAKI	24,76	35,06					
KASTELI	25,33	35,18	25,6	29,5	21,5	0	338
KARPATOS	27,15	35,42	26,7	29,5	24,9	0	
PAROS	25,13	37,02	26,7	30	23	0	355
SYROS	24,95	37,42	27,6	30	24,5	0	348
IKARIA	26,35	37,68					

**TABLE OF DEVIATIONS
FROM NORMAL VALUES**

STATION	TMEAN (deviation) (I)	PRECI (deviation %) (II)
SERRES	3.1	90
FLORINA		
THESSALONIKI	1.4	534
ALEXANDROUPOLI	2.9	57
KOZANI	0.7	265
KERKYRA	2.2	253
IOANNINA	0.9	180
LARISA	1.3	181
LIMNOS	2.5	0
AGHIALOS	1.4	194
MYTILINI	2.1	0
AGRINIO		
SKYROS	1.1	49
ARGOSTOLI	2	1
ARAXOS	2	1
HIOS	2.2	1000
HELLINIKO	2.2	173
ZAKYNTHOS	2.4	1
SAMOS	1.3	546
KALAMATA	1.6	10
NAXOS		
METHONI		
SANTORINI	2.2	0
SOUDA	1.6	0
RODOS	1.4	0
HERAKLIO	1.6	0
SITIA	0.6	0

(I) deviation of mean temperature from normal values
 (II) deviation of monthly precipitation height from normal values %.

Climatic Bulletin

General Description

Precipitation amounts were higher enough than normal values over Ionian area and over central and north mainland as well. The mean temperature varied higher than normals over most parts.

Climatic Parameters :

- ❖ **Normal Values** : normal values for various parameters (temperature, precipitation, etc) are defined as mean values calculated for 30 years. These normal values are used as basis and represent the mean situation. They can be specified in 10 daily, monthly, seasonally and yearly level and are used for the trend comparison of 10 days, month, season or year as: rainy decameron, mild winter, cool August etc.

Measurement :

- ❖ **Precipitation**
1 mm = 1 litre/m²

Table Legend :

Tmean : Mean Temperature
 TN : Minimum Temperature
 TX : Maximum Temperature
 RR : Precipitation height(mm)
 INST : Sun Duration (hours)

UTC hours (Universal Time Coordinates) in Greece :

- ❖ Winter : UTC hour = local hour - 2
- ❖ Summer : UTC hour = local hour - 3

© Hellenic National Meteorological Service
 Reproduction is prohibited without written authorization
 14 El.Venizelou 16777
 Helliniko, Athens
 Greece