



Climatic Bulletin

December 2010

 **Max
temperature**

 **Min
temperature**

 **Mean
temperature**

 **Precipitation**

 **Sunshine
duration**



December had a very warm first ten-day period, a quite cold second one and a third one with significant up and downs of temperature. Very strong rainfalls and thunderstorms recorded which caused floods mainly over Epirus and Crete. In parallel the northwestern parts of Peloponnese were hit by whirlwinds while great amounts of dust carried from Africa mainly during first days. Strong gale force north winds caused a lot of problems over Aegean area and Crete.



ΕΘΝΙΚΗ
ΜΕΤΕΩΡΟΛΟΓΙΚΗ
ΥΠΗΡΕΣΙΑ

HELLENIC NATIONAL METEOROLOGICAL SERVICE

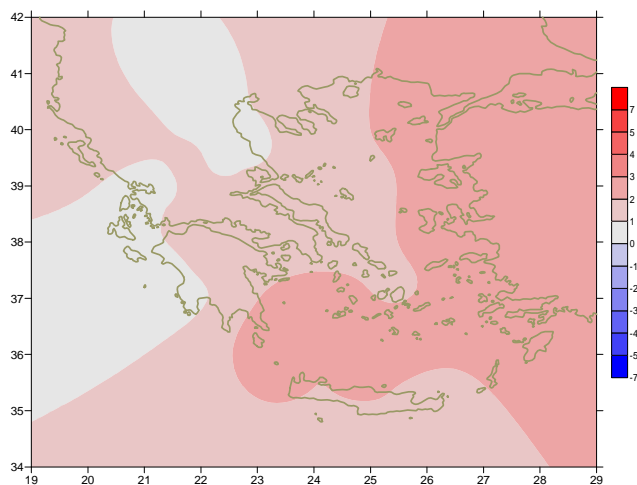


Temperature

First Decameron

Minimum: The high values declined from 5/12.
More specific:
 -0.8°C in Kastoria and -1.8°C in Tripoli at 5/12.

Maximum: Relatively low values in the middle.
More specific:
 8.6°C in Ioannina, 8.6°C in Kastoria at 5/12,
 10.6°C in Chrissoupoli (Kavala) at 10/12.

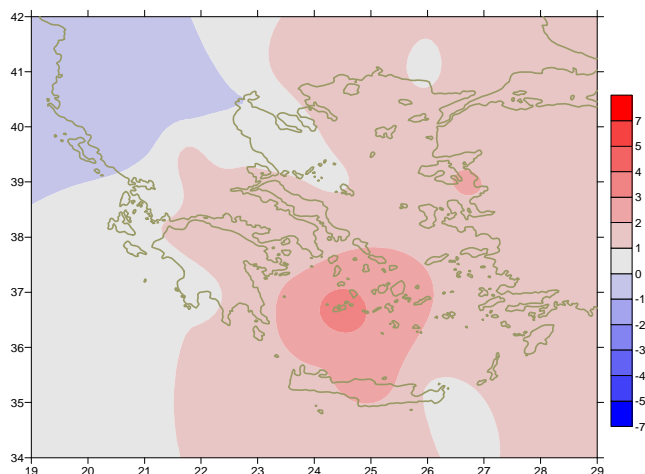


Deviation of mean temperature from normal values

Second Decameron

Minimum: The values decreased rapidly twice, at period of two days 10-11/12 and 17-18/12.
More specific:(from the lowest)
 -6.6°C in Alexandroupoli at 12/12, -10°C in Larisa at 17/12 and -13.6°C in Kastoria at 18/12.

Maximum: total frost (the temperature did not exceed 0°C during night and day) over Northwestern mainland.
More specific:)
 -1.6°C in Kozani, -0.2°C in Kastoria at 11/12
 -4.6°C in Kozani, -0.8°C in Kastoria at 15/12 as well.

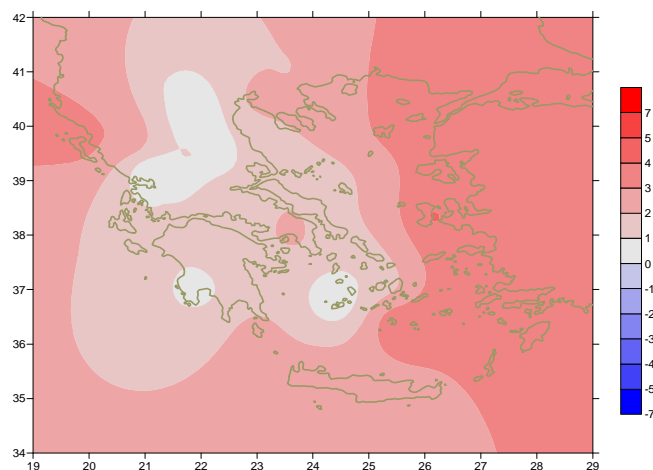


Deviation of maximum temperature from normal values

Third Decameron

Minimum: the values increased between 21-23/12 and decreased at the end.
More specific:(the contrast)
 $+2.4^{\circ}\text{C}$ in Kastoria at 21/12 and -7°C in the same town at 31/12.

Maximum: low values last days.
For example:
 5.6°C in Alexandroupoli, 6.4°C in Thessaloniki at 28/12 and 6.4°C in Serres at 29/11.



Deviation of minimum temperature from normal values



Precipitation

First Decameron

High precipitation recorded

over Epirous and N.Ionion from the beginning .

More specific:

58mm in Ioannina ,

78mm in Konitsa and 44mm in Kerkira at 4/12.

Second Decameron

very high precipitation recorded mainly over

South Aegean and Crete.

More specific:

127mm in Milos at 12/12,

107mm in Kastelli (Iraklion) at 12/12,

37mm in Syros at 16/12, 42mm in Rodos at 16/12.

Third Decameron

Relatively high precipitation recorded

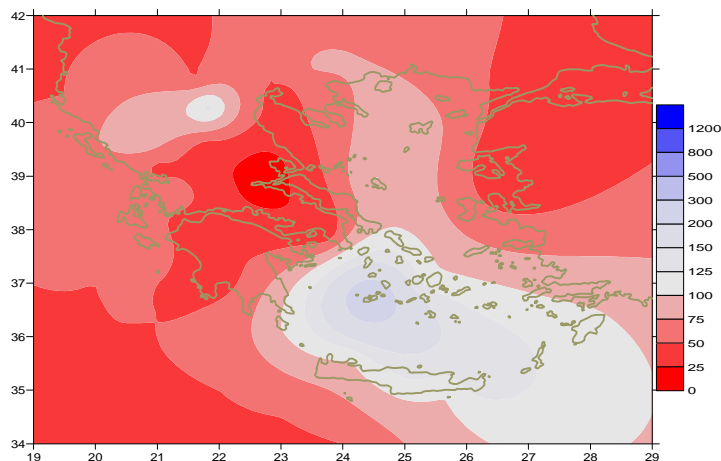
during last five days.

More specific:

39mm in Mitilini at 27/12,

21mm in Skyros at 28/12 and

36mm in Sitia at 29/12.



*Deviation of monthly perezipitatin
height from normal values (%)*

TABLE OF MEAN VALUES

| STATION | Longitude | Latitude | Tmean | TX | TN | RR | INST |
|--------------------|-----------|----------|-------|------|------|-----|------|
| SERRES | 23,53 | 41,07 | 6,3 | 10,7 | 2,8 | 34 | 64 |
| FLORINA | 21,40 | 40,78 | | | | | |
| KASTORIA | 21,27 | 40,45 | 4,2 | 8,7 | 0,1 | 72 | 102 |
| TRIKALA_IMATHIAS | 22,55 | 40,60 | 6,2 | 10,6 | 2,8 | 24 | 122 |
| THESSALONIKI | 22,97 | 40,52 | 7,8 | 10,9 | 5,1 | 20 | 122 |
| CHRYSOUPOLI | 24,62 | 40,92 | 8,8 | 12,2 | 5,5 | 52 | 98 |
| ALEXANDROUPOLI | 25,95 | 40,85 | 9,3 | 11,6 | 6,9 | 48 | 74 |
| KOZANI | 21,83 | 40,28 | 4 | 7,6 | 0,3 | 74 | |
| KERKYRA | 19,92 | 39,62 | 12,5 | 15 | 10 | 131 | 88 |
| IOANNINA | 20,82 | 39,70 | 7,6 | 10,8 | 4,4 | 165 | 52 |
| PREVEZA | 20,76 | 38,91 | 12,2 | 15,5 | 9,3 | 102 | |
| TRIKALA_THESSALIAS | 21,77 | 39,52 | 7,9 | 12,3 | 3,9 | 32 | |
| LARISA | 22,45 | 39,65 | 6,7 | 11,3 | 2,6 | 19 | 106 |
| LIMNOS | 25,23 | 39,92 | 11,5 | 13,9 | 9,3 | 73 | 104 |
| ARTA | 21,00 | 39,17 | 10,2 | 15,4 | 6 | 87 | 51 |
| AGHIALOS | 22,78 | 39,21 | 9,1 | 13,5 | 5,5 | 10 | 118 |
| MYTILINI | 26,60 | 39,05 | 13,6 | 15,9 | 11,7 | 110 | 105 |
| VELO | 22,77 | 37,97 | 12,3 | 16,6 | 8,5 | 32 | 120 |
| AGRINIO | 21,35 | 38,60 | 10,5 | 15,5 | 5,8 | 103 | |
| LAMIA | 22,43 | 38,87 | 10 | 15,7 | 5,7 | 16 | 115 |
| ANDRAVIDA | 21,28 | 37,92 | 12,6 | 16,6 | 9,1 | 64 | 111 |
| SKYROS | 24,48 | 38,96 | 12,7 | 14,9 | 10,8 | 79 | 80 |
| ARGOSTOLI | 20,50 | 38,12 | 13,7 | 16,4 | 11,5 | 70 | 106 |
| ARAXOS | 21,42 | 38,15 | 12,6 | 16,4 | 8,8 | 47 | 115 |
| TANAGRA | 23,57 | 38,33 | 10,8 | 14,9 | 7 | 24 | 102 |
| HIOS | 26,13 | 38,35 | 13,7 | 16 | 11,5 | 66 | 92 |
| PYRGOS | 21,42 | 37,67 | 13 | 17 | 9,5 | 56 | 86 |
| TRIPOLI | 22,40 | 37,52 | 8,3 | 12,8 | 4,6 | 70 | 122 |
| TATOI | 23,78 | 38,10 | 10,6 | 14,2 | 7,4 | 21 | |
| HELLINIKO | 23,73 | 37,90 | 13,7 | 16,4 | 11 | 22 | 101 |
| ELEYSINA | 23,55 | 38,07 | 12,3 | 16,1 | 9 | 18 | |
| ZAKYNTHOS | 20,88 | 37,75 | 13,4 | 16,1 | 11,3 | 115 | 105 |
| SAMOS | 26,92 | 37,68 | 14,3 | 16,8 | 12,3 | 115 | 119 |
| ARGOS | 22,75 | 37,63 | | | | | |
| KALAMATA | 22,02 | 37,07 | 12,4 | 17 | 7,7 | 57 | 128 |
| NAXOS | 25,37 | 37,10 | 15,4 | 18,2 | 12,4 | 75 | 86 |
| METHONI | 21,70 | 36,82 | 13,8 | 17,3 | 10,5 | 65 | 133 |
| MHLOS | 24,43 | 36,73 | 14,9 | 20,2 | 9,8 | 238 | |
| SPATA | 23,95 | 37,95 | 12 | 15,4 | 7,5 | 33 | |
| KOS | 27,08 | 36,80 | 14,8 | 16,6 | 13,4 | 84 | |
| KYTHIRA | 22,98 | 36,15 | | | | | |
| SANTORINI | 25,41 | 36,41 | 15,5 | 17,5 | 14 | 94 | 134 |
| SOUDA | 24,12 | 35,55 | 14,6 | 18,1 | 11,9 | 93 | 121 |
| RODOS | 28,08 | 36,40 | 16 | 18,4 | 14,1 | 149 | 140 |
| MYKONOS | 25,35 | 37,43 | 13,9 | 16 | 12,6 | 77 | |
| HERAKLEIO | 25,18 | 35,33 | 15,9 | 19,4 | 13,4 | 105 | 130 |
| IERAPETRA | 25,73 | 35,02 | | | | | |
| SITEIA | 26,10 | 35,21 | 15,6 | 18 | 13,8 | 132 | 124 |
| RETHYMNO | 24,50 | 35,36 | | | | | |
| TYMPAKI | 24,76 | 35,06 | | | | | |
| KASTELI | 25,33 | 35,18 | 12,8 | 16,5 | 10 | 200 | 148 |
| KARPATOS | 27,15 | 35,42 | 16,8 | 18,7 | 15,6 | 52 | |
| PAROS | 25,13 | 37,02 | 14,7 | 16,9 | 12,7 | 61 | 118 |
| SYROS | 24,95 | 37,42 | 14,6 | 16,8 | 12 | 93 | 124 |
| IKARIA | 26,35 | 37,68 | 15,2 | 16,6 | 13,9 | 200 | |

Climatic Bulletin

General Description

Precipitation amounts were quite lower than normal values over most parts and mainly over Thessaly, Eastern Sterea and Peloponnese. In contrast they were higher over South Aegean and Crete. The mean temperature varied higher than normal values all over the Greek area and mainly over the Dodecanese, the islands of eastern Aegean and parts of South Aegean sea.

Climatic Parameters :

- ❖ **Normal Values** : normal values for various parameters (temperature, precipitation, etc) are defined as mean values calculated for 30 years. These normal values are used as basis and represent the mean situation. They can be specified in 10 daily, monthly, seasonally and yearly level and are used for the trend comparison of 10 days, month, season or year as: rainy decameron, mild winter, cool August etc.

Measurement :

- ❖ **Precipitation**
1 mm = 1 litre/m²

Table Legend :

Tmean : Mean Temperature
 TN : Minimum Temperature
 TX : Maximum Temperature
 RR : Precipitation height(mm)
 INST : Sun Duration (hours)

UTC hours (Universal Time Coordinates) in Greece :

- ❖ Winter : UTC hour = local hour - 2
- ❖ Summer : UTC hour = local hour - 3

© Hellenic National Meteorological Service
 Reproduction is prohibited without written authorization
 14 El.Venizelou 16777
 Helliniko, Athens
 Greece